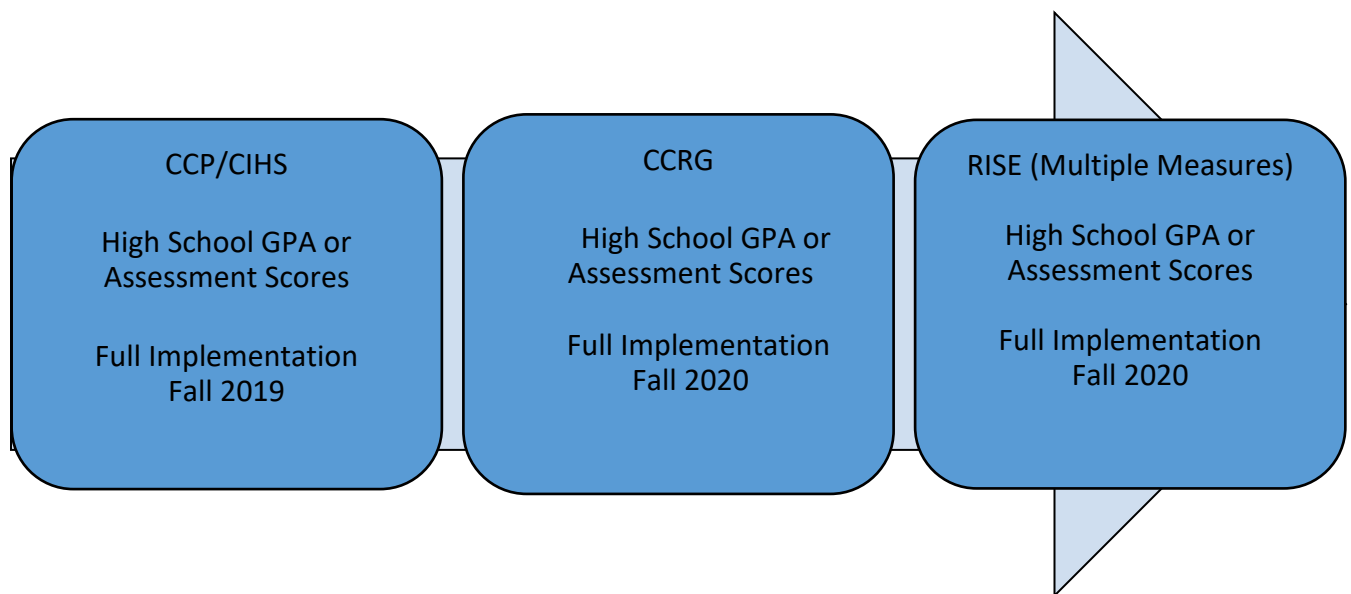


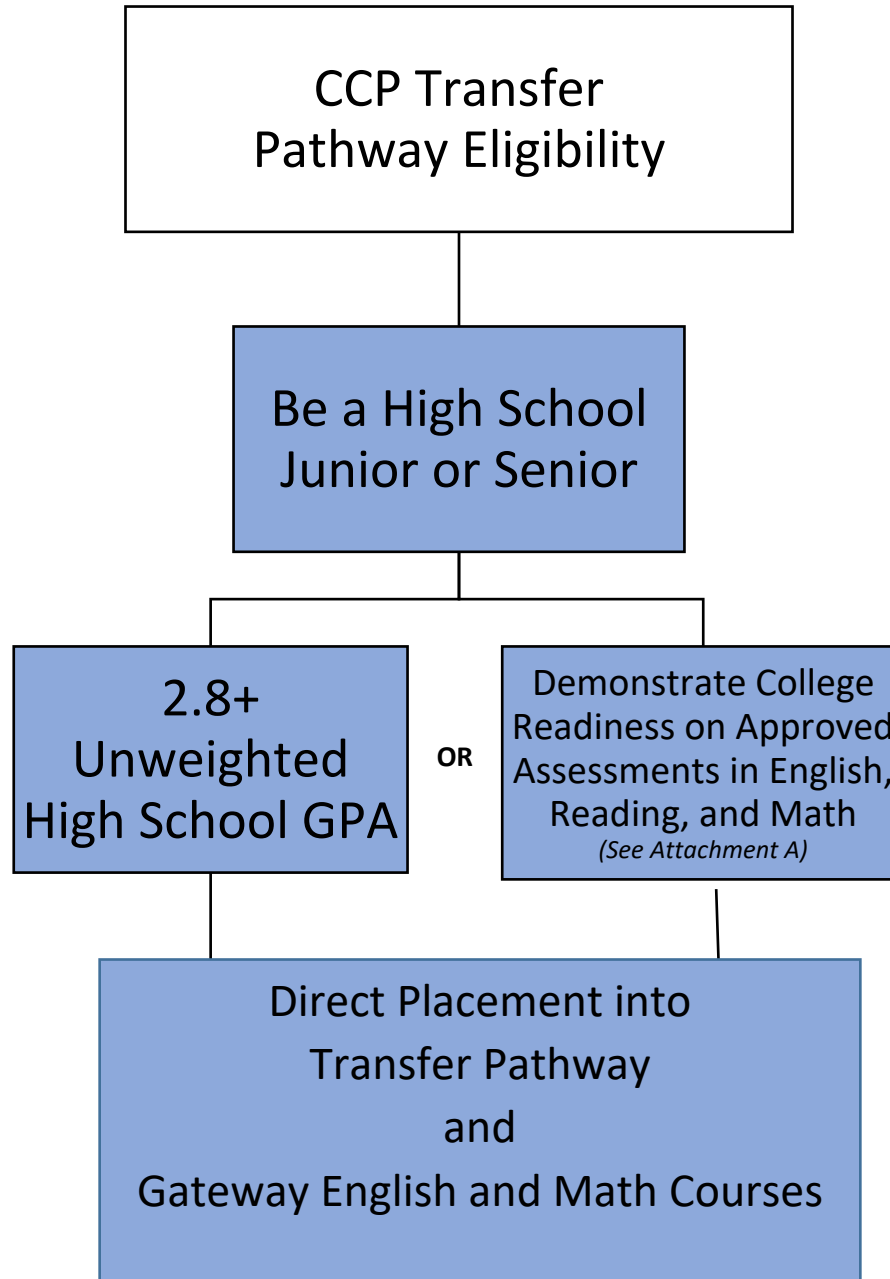
The Career and College Promise (CCP) Operating Procedures and State Board Code define the eligibility requirements for high school student pathway and course eligibility. As a result of the alignment of eligibility criteria between Reinforced Instruction for Student Excellence (RISE) and Career and College Ready Graduate (CCRG) program, an update to the Career and College Promise (CCP) Operating Procedures is needed. An overview of the proposed eligibility changes to the CCP Operating Procedures are included in the following pages.

RISE, CCRG and CCP Alignment Implementation Timeline

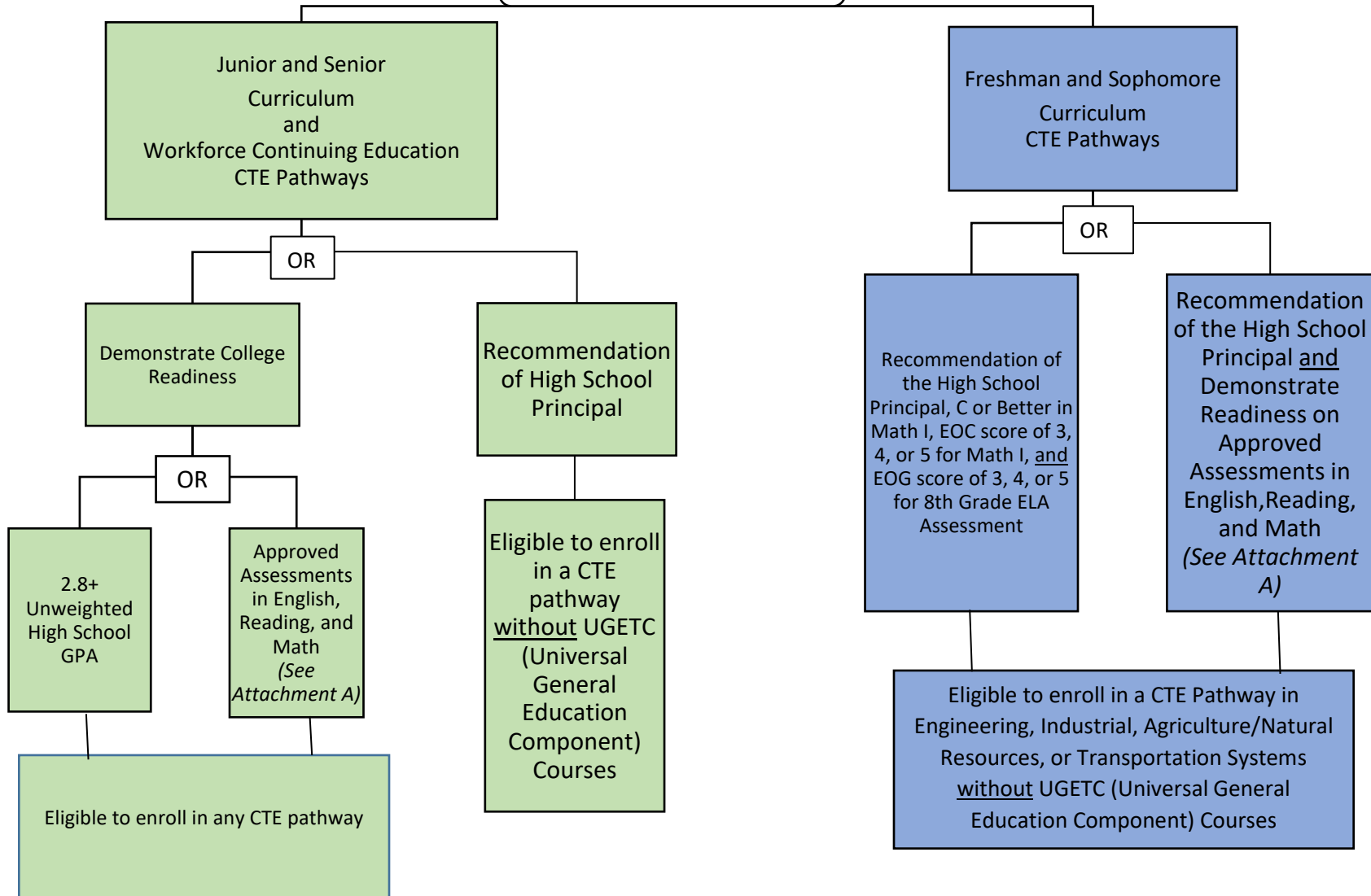


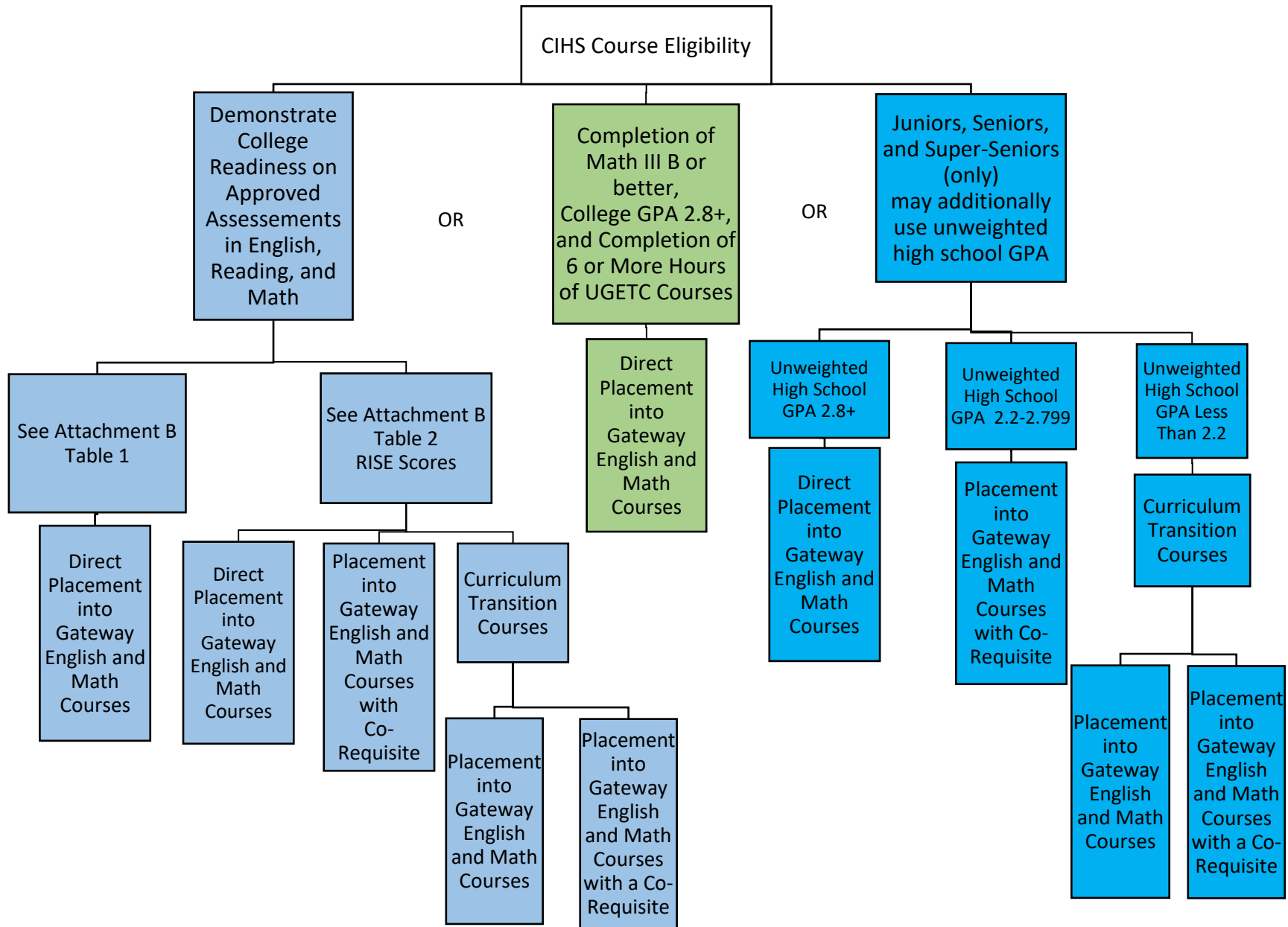
High School Eligibility Standards:

- Transfer pathway students will have the option to qualify for the program with their **unweighted high school GPA OR assessment scores from Attachment A.**
- Attachment A has been updated to include the new RISE placement scores, AP, IB, and Cambridge as new assessment options for entry into the program.
- Provisional entry into transfer pathways will no longer exist because the requirement for GPA and assessment scores will become an OR instead of AND.
- CTE pathway students will have the option to qualify for the program with their **unweighted high school GPA OR assessment scores from Attachment A.**
- Principals (or their designee) may still submit a waiver to allow a student entry into a CTE pathway. If a waiver is submitted, the principal (or their designee) will need to provide a rationale for why the GPA requirement was waived. **CTE pathways that include UGETC (Universal General Education Transfer Component) courses will not be eligible for the principal waiver/designee waiver for entry into the CCP program.**
- CTP and CTE Pathway students who enroll in gateway English or math courses will have the option to enroll in the new English and math co-req courses once admitted, but they will not be required to do so (think of the co-requisites as optional gen ed).
- **Cooperative Innovative High School (CIHS) (i.e. early college/middle college/other CIHS program) students will have a new section (Attachment B) with gateway course eligibility options.** The options will include using high school GPA in their junior/senior/super-senior year, assessment options that mirror those in attachment A, additional RISE placement options (which will mirror those adults will have access to), and an option to place using math III & college GPA.



CCP CTE Pathway Eligibility





***Program Eligibility Benchmarks on Approved Diagnostic Assessment Tests**

Test	PSAT 10 and PSAT/NMSQT (2015 and Future)	SAT (March 2016 and Future)	Pre-ACT and ACT	NC DAP (NCCCS Cut Score)	RISE Placement Test
English	26 or a composite score of 460 for Evidenced-Based Reading and Writing	480 composite score for Evidenced- Based Reading and Writing	18	Composite score of 151 or higher	75 or higher on Tier 1 <i>and</i> Tier 2 <i>(See RISE placement Guide)</i>
Reading	26 or a composite score of 460 for Evidenced-Based Reading and Writing		22		
Mathematics	24.5 or 510	530	22	7 on each assessment for DMA 010 thru 060	75 or higher on Tier 1 <i>and</i> Tier 2 <i>and</i> Tier 3 <i>(See RISE placement Guide)</i>

Advanced Placement (AP)		International Baccalaureate (IB)		Cambridge International Examinations	
English, Language and Composition	3 or higher	IB English A (Standard or Higher Level)	4 or higher	AS Level English Language	C or higher
English, Literature, and Composition	3 or higher	IB Mathematics (Higher Level)	4 or higher	A Level English Language	C or higher
Calculus AB	3 or higher	IB Advanced Mathematics (Higher Level)	4 or higher	AS Level Language and Literature in English	C or higher
Calculus BC	3 or higher	IB Mathematical Studies (Standard Level)	4 or higher	AS Level Math	C or higher

*To be eligible for enrollment in a College Transfer Pathway, students must demonstrate college readiness in English, reading, and mathematics on an approved test or tests. Eligibility may be demonstrated by achieving the required scores on a single test or by combining test scores from any of the approved assessments. For example, a student may combine a 22 on ACT math with a 480 on SAT composite score for evidenced based reading and writing to demonstrate college readiness.	A Level Math	C or higher
	A Level Mathematics -Further	C or higher

Attachment B

Cooperative Innovative High School (CIHS) Course Eligibility Policy

In order to enroll in a gateway English (ENG 111) and/or gateway math (MAT 110 or higher) course, students must demonstrate college readiness in English, reading, and mathematics on an approved test or tests. Eligibility may be demonstrated by achieving the required scores on a single test or by combining test scores from any of the approved assessments. For example, a student may combine a 22 on ACT math with a 480 on SAT composite score for evidenced based reading and writing to demonstrate college readiness.

CIHS Students can enroll in a gateway English or math course by:

1. Grades 9-13 - Demonstrate college readiness in English, reading and mathematics on an approved assessment. *(See Table 1 & Table 2 for course placement scores below.)* **or**
2. Grades 9-13 Completion of Math III with a B or better, have a college GPA of 2.8 or higher which includes 6 or more hours of UGETC courses. **or**
3. Be a junior or senior/super-senior **and** have an unweighted high school GPA of 2.8 or higher to directly place into a gateway English or math course without a co-requisite; Be a junior or senior/super-senior **and** have an unweighted high school GPA of 2.2-2.799 to place into a gateway English or math course with a co-requisite; Junior or senior/super-seniors with an unweighted high school GPA less than 2.2 may enroll in the curriculum transition courses.

Table 1. Direct Placement Course Eligibility Scores – CIHS Grades 9-13

Test	PSAT 10 and PSAT/NMSQT 2015 and Future **	SAT (March 2016 and Future)	Pre-ACT and ACT	NC DAP(NCCCS Cut Score)	RISE Placement Test
English	26 or a composite score of 460 for Evidenced-Based Reading and Writing	480 composite score for Evidenced-Based Reading and Writing	18	Composite score of 151 or higher	See Table 2 Below **
Reading	26 or a composite score of 460 for Evidenced-Based Reading and Writing		22		

Mathematics	24.5 or 510	530	22	7 on each assessment for DMA 010 thru 060	See Table 2 Below**
--------------------	-------------	-----	----	---	---------------------

Advanced Placement (AP)		International Baccalaureate (IB)		Cambridge International Examinations	
English, Language and Composition	3 or higher	IB English A (Standard or Higher Level)	4 or higher	AS Level English Language	c or higher
English, Literature, and Composition	3 or higher	IB Mathematics (Higher Level)	4 or higher	A Level English Language	C or higher
Calculus AB	3 or higher	IB Advanced Mathematics (Higher Level)	4 or higher	AS Level Language and Literature in English	c or higher
Calculus BC	3 or higher	IB Mathematical Studies (Standard Level)	4 or higher	AS Level Math	c or higher
<p>*To be eligible for enrollment in a gateway English or math course, students must demonstrate college readiness in English, reading, and mathematics on an approved test or tests. Eligibility may be demonstrated by achieving the required scores on a single test or by combining test scores from any of the approved assessments. For example, a student may combine a 22 on ACT math with a 480 on SAT composite score for evidenced based reading and writing to demonstrate college readiness.</p>				A Level Math	C or higher
				A Level Mathematics - Further	C or higher

Table 2. RISE English and Math Assessment/Course Eligibility Scores – CIHS Grades 9-13

RISE English Assessment/Course Eligibility			
Student is eligible to register for:			
Tier 1 (unit 6) placement test*	ENG-111 with a co-requisite		
Tier 2 (unit 10) placement test**	ENG-111 without a co-requisite		
<p>*If a student does not score 75+ on the RISE English Tier 1 placement test he/she may enroll in the curriculum RISE Transition English course (available through curriculum only).</p> <p>**A student must score 75+ on Tier 1 before taking the Tier 2 placement test.</p>			
RISE Math Assessment/Course Eligibility			
A score of 75+ on:	Student is eligible to register for:		
Tier 1 (unit 8)*	MAT-110 without a co-requisite	OR	MAT-143 with a co-requisite OR MAT-152 with a co-requisite <i>Note: Enrollment in MAT-143 and MAT-152 also contains a pre-requisite of ENG-002, grade P1 or higher (this replaces DRE-098).</i>
Tier 2 (unit 12)**	MAT-143 without a corequisite OR MAT-152 without a co-requisite	OR	MAT-121 with a co-requisite OR MAT-171 with a co-requisite
Tier 3 (unit 17)***	MAT-121 without a co-requisite OR MAT-171 without a co-requisite		
<p>*If a student does not score 75+ on Tier 1 he/she may enroll in the curriculum RISE Transition Math course (available through curriculum only).</p> <p>**A student must score 75+ on Tier 1 before taking the Tier 2 placement test.</p> <p>***A student must score 75+ on Tier 2 before taking the Tier 3 placement test.</p>			

Updated 7-25-23

Edgecombe Community College offers 3 pathways for College Transfer.

The following pathways for **College Transfer** have been approved:

This pathway will lead to the Associate in Arts (P1012C)

Courses	Hours
ENG 111 Writing and Inquiry	3 SHC
ENG 112 Writing/Research in the Disciplines	3 SHC
COM 231 Public Speaking	3 SHC
ART 111 Art Appreciation	3 SHC
ENG 231 American Literature I	3 SHC
ENG 232 American Literature II	3 SHC
MUS 110 Music Appreciation	3 SHC
PHI 240 Introduction to Ethics	3 SHC
ECO 251 Principles of Microeconomics	3 SHC
ECO 252 Principles of Macroeconomics	3 SHC
HIS 111 World Civilizations I	3 SHC
HIS 112 World Civilizations II	3 SHC
HIS 131 American History I	3 SHC
HIS 132 American History II	3 SHC
POL 120 American Government	3 SHC
PSY 150 General Psychology	3 SHC
SOC 210 Intro to Sociology	3 SHC
MAT 143 Quantitative Literacy	3 SHC
MAT 152 Statistical Methods I	4 SHC

Updated 7-25-23

MAT 171 Precalculus Algebra	4 SHC
AST 111/111A Descriptive Astronomy and Lab	4 SHC
BIO 110 Principles of Biology	4 SHC
BIO 111 General Biology I	4 SHC
CHM 151 General Chemistry I	4 SHC
GEL 111 Intro to Geology	4 SHC
PHY 110/110A Conceptual Physics and Lab	4 SHC
ACA 122 College Transfer Success	2 SHC

Once in the College Transfer Pathway, students must continue to make progress toward high school graduation and maintain college GPA of 2.0. A student may change his or her program of study with the approval of the high school principal or designee and the college's chief student development administrator. A student may enroll in a College Transfer Pathway and a Career and Technical Program of Study.

This pathway will lead to Associate in Science (P1042C)

Courses	Hours
ENG 111 Writing and Inquiry	3 SHC
ENG 112 Writing/Research in the Disciplines	3 SHC
COM 231 Public Speaking	3 SHC
ART 111 Art Appreciation	3 SHC
ENG 231 American Literature I	3 SHC
ENG 232 American Literature II	3 SHC
MUS 110 Music Appreciation	3 SHC
PHI 240 Introduction to Ethics	3 SHC

Updated 7-25-23

ECO 251 Principles of Microeconomics	3 SHC
ECO 252 Principles of Macroeconomics	3 SHC
HIS 111 World Civilizations I	3 SHC
HIS 112 World Civilizations II	3 SHC
HIS 131 American History I	3 SHC
HIS 132 American History II	3 SHC
POL 120 American Government	3 SHC
PSY 150 General Psychology	3 SHC
SOC 210 Intro to Sociology	3 SHC
MAT 171 Precalculus Algebra	4 SHC
MAT 172 Pre-calculus Trigonometry	4 SHC
MAT 271 Calculus I	4 SHC
BIO 110 Principles of Biology	4 SHC
BIO 111 General Biology I	4 SHC
BIO 112 General Biology II	4 SHC
CHM 151 General Chemistry I	4 SHC
CHM 152 General Chemistry II	4 SHC
GEL 111 Intro to Geology	4 SHC
PHY 110/110A Conceptual Physics and lab	4 SHC
PHY 151 College Physics I	4 SHC
PHY 152 College Physics II	4 SHC
PHY 251 General Physics I	4 SHC

Updated 7-25-23

PHY 252 General Physics II	4 SHC
ACA 122 College Transfer Success	2 SHC

Once in the College Transfer Pathway, students must continue to make progress toward high school graduation and maintain college GPA of 2.0. A student may change his or her program of study with the approval of the high school principal or designee and the college's chief student development administrator. A student may enroll in a College Transfer Pathway and a Career and Technical Program of Study.

Career and College Promise Associate Degree Nursing (ADN) Pathway (New)

This pathway will lead to the Associate in Arts (P1032C) – *effective Fall 2018*

Courses	Hours
ENG 111	3 SHC
ENG 112	3 SHC
ENG 114	3 SHC
ART 111	3 SHC
MUS 110	3 SHC
PHI 240	3 SHC
HUM 115	3 SHC
PSY 150	3 SHC
PSY 241	3 SHC
BIO 168	4 SHC
BIO 169	4 SHC
ACA 122	1 SHC

Updated 7-25-23

Once in the College Transfer Pathway, students must continue to make progress toward high school graduation and maintain college GPA of 2.0. A student may change his or her program of study with the approval of the high school principal or designee and the college's chief student development administrator. A student may enroll in a College Transfer Pathway and a Career and Technical Program of Study.

CTE Pathways for High School Students:

Accounting: C25800AH

<u>Fall Hours</u>	<u>Course Hours</u>
ACC 120	4 SHC
BUS 115	3 SHC
<u>Spring Hours</u>	
ACC 121	4 SHC
ACC 149	2 SHC
<u>Total Hours</u>	13 SHC

Animal Science: C15100AH

<u>Fall Hours</u>	<u>Course Hours</u>
ANS 110	3 SHC
ANS 115	3 SHC
<u>Spring Hours</u>	
ACM 111	3 SHC
ANS 160	3 SHC
<u>Total Hours</u>	12 SHC

Agribusiness: (standard) C15100CH

<u>Fall Hours</u>	<u>Course Hours</u>
AGR 212	3 SHC
ANS 110	3 SHC
<u>Spring Hours</u>	
AGR 140	3 SHC
AGR 261	3 SHC
<u>Total</u>	12 SHC

Automotive Systems Technology: C60160AH

<u>Fall Hours</u>	<u>Course Hours</u>
AUT 116	2 SHC
TRN 110	3 SHC
<u>Spring Hours</u>	
AUT 151	5 SHC
TRN 120	7 SHC
<u>Total Hours</u>	17 SHC

Agribusiness: (advanced) C15100DH

<u>Fall Hours</u>	<u>Course Hours</u>
AGR 212	3 SHC
ANS 110	3 SHC
<u>Spring Hours</u>	
BUS 110	3 SHC
BUS 137	3 SHC
<u>Total Hours</u>	12 SHC

Business Administration: C25120GH

<u>Fall</u>	<u>Course Hours</u>
BUS 110	3 SHC
MKT 120	3 SHC
<u>Spring</u>	
BUS 137	3 SHC
BUS 240	3 SHC
<u>Total Hours</u>	12 SHC

Collision Repair: C6130AH

Fall	Course Hours
AUB 121	3 SHC
TRN 110	2 SHC
Spring	
AUB 111	4 SHC
TRN 180	3 SHC
Total Hours	12 SHC

Distribution Management: C25620AH (online)

Fall Hours	Course Hours
LOG 110	3 SHC
LOG 210	3 SHC
Spring Hours	
LOG 120	3 SHC
LOG 211	3 SHC
Total Hours	12 SHC

Cosmetology: D55140AH

Fall Hours	Course Hours
COS 111AB	2 SHC
COS 112AB	4 SHC
Spring Hours	
COS 111BB	2 SHC
COS 111BB	4 SHC
Other classes	
COS 113	4 SHC
COS 114	8 SHC
COS 115	4 SHC
COS 116	4 SHC
COS 117	2 SHC
Total Hours	34 SHC

Early Childhood Education: C55220CH

Fall Hours	Course Hours
EDU 119	4 SHC
EDU 151	3 SHC
EDU 151A	1 SHC
Spring Hours	
EDU 184	2 SHC
EDU 259	3 SHC
Total Hours	13 SHC

Criminal Justice Technology: C55180AH

Fall Hours	Course Hours
CJC 131	3 SHC
CJC 112	3 SHC
Spring Hours	
CJC 111	3 SHC
CJC 221	4 SHC
Total Hours	13 SHC

Electrical Systems AMP: C35130GH

Fall Hours	Course Hours
ELC 112	5 SHC
ISC 112	2 SHC
Spring Hours	
ELC 126	3 SHC
ELC 117	4 SHC
Total Hours	14 SHC

*** Human Services Technology: C45380BH**

Fall Hours	Course Hours
HSE 110	3 SHC
HSE 123	3 SHC
PSY 150	3 SHC
Spring Hours	
SAB 110	3 SHC
SOC 210	3 SHC
Total Hours	15 SHC

IT: Exploration Certificate: C25590AA

<u>Fall Hours</u>	<u>Course Hours</u>
CIS 110	3 SHC
CTS 115	3 SHC
<u>Spring Hours</u>	
CTI 110	3 SHC
CTI 120	3 SHC
<u>Total Hours</u>	12 SHC

Geographic Info. Science: C40220AC

<u>Fall Hours</u>	<u>Course Hours</u>
CIS 110	3 SHC
GIS 111	3 SHC
<u>Spring Hours</u>	
CIS 121	3 SHC
GEO 111	3 SHC
<u>Total Hours</u>	12 SHC

IT: CCNA Core: C25590BA

<u>Fall Hours</u>	<u>Course Hours</u>
CTI 120	3 SHC
<u>Spring Hours</u>	
NET 125	3 SHC
<u>Fall Hours</u>	
NET 126	3 SHC
<u>Spring Hours</u>	
NET 225	3 SHC
<u>Total Hours</u>	12 SHC

Internet Mapping Foundations: C40220AD

<u>Fall Hours</u>	<u>Course Hours</u>
CIS 110	3 SHC
GIS 111	3 SHC
<u>Spring Hours</u>	
GIS 121	3 SHC
GIS 222	3 SHC
<u>Total Hours</u>	12 SHC

IT: Software Development: C25590CB

<u>Spring Hours</u>	<u>Course Hours</u>
CIS 115	3 SHC
CTI 110	3 SHC
<u>Fall Hours</u>	
CSC 121	3 SHC
<u>Spring Hours</u>	
CSC 151	3 SHC
<u>Total Hours</u>	12 SHC

Unmanned Aircraft Systems: C40220BB

<u>Fall Hours</u>	<u>Course Hours</u>
GIS 110	1 SHC
UAS 110	3 SHC
UAS 111	3 SHC
UAS 115	2 SHC
<u>Spring Hours</u>	
UAS 230	3 SHC
<u>Total Course Hours</u>	12 SHC

IT: Support Services: C25590AB

<u>Fall Hours</u>	<u>Course Hours</u>
CTI 120	3 SHC
CTS 120	3 SHC
<u>Spring Hours</u>	
CTS 220	3 SHC
<u>Fall Hours</u>	
CTS 155	3 SHC
<u>Total Hours</u>	12 SHC

Manufacturing Technology: C50320IH

<u>Fall</u>	<u>Course Hours</u>
ELC 131	4 SHC
MEC 145	3 SHC
<u>Spring</u>	
MEC 151	2 SHC
MEC 231	3 SHC
HYD 110	3 SHC
<u>Total Hours</u>	15 SHC

Updated 7-25-23

Medical Assistant: C45400CH

<u>Fall Hours</u>	<u>Course Hours</u>
MED 121	3 SHC
MED 114	1 SHC
MED 118	2 SHC
Spring Hours	
MED 122	3 SHC
MED 140	5 SHC
Total Hours	14 SHC

Trucking Operations: C25620BH

<u>Fall Hours</u>	<u>Course Hours</u>
LOG 110	3 SHC
LOG 210	3 SHC
Spring Hours	
TOM 130	3 SHC
TOM 250	3 SHC
Total Hours	12 SHC

Medical Office Administration: C25310AH

<u>Fall Hours</u>	<u>Course Hours</u>
MED 121	3 SHC
OST 148	3 SHC
Spring Hours	
MED 122	3 SHC
OST 149	3 SHC
Total Hours	12 SHC

Welding: C50420AH

<u>Fall Hours</u>	<u>Course Hours</u>
WLD 112	2 SHC
WLD 115	5 SHC
Spring Hours	
WLD 110	2 SHC
WLD 121	4 SHC
Total Hours	13 SHC

- Indicates that the pathway requires an unweighted gpa of 2.8